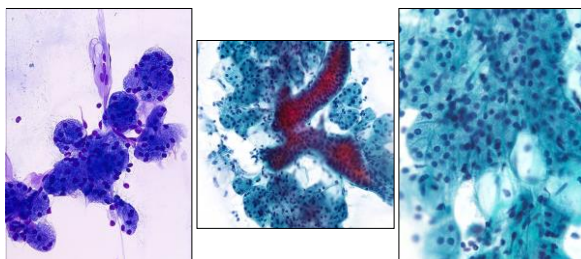


The Milan System for Reporting Salivary Gland Cytopathology

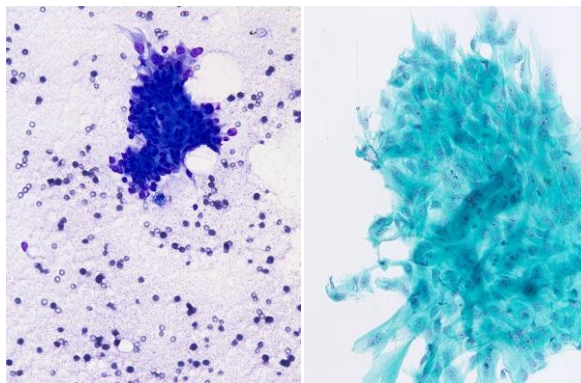
	ROM (%)	Management
• Non-diagnostic	25	Clinical/radiographic correlation Repeat FNA
• Non-neoplastic	10	Clinical fu and radiologic correlation
• AUS	20	Repeat FNA or surgery
• Neoplasm – a) Benign b) BUMP	< 5 35	Conservative surgery or clinical fu Conservative surgery
• Suspicious for Malignancy (Low grade vs. High grade)	60	Surgery Correlate LG vs. HG
• Malignant (Low grade vs. High grade)	90	Surgery Correlate LG vs. HG

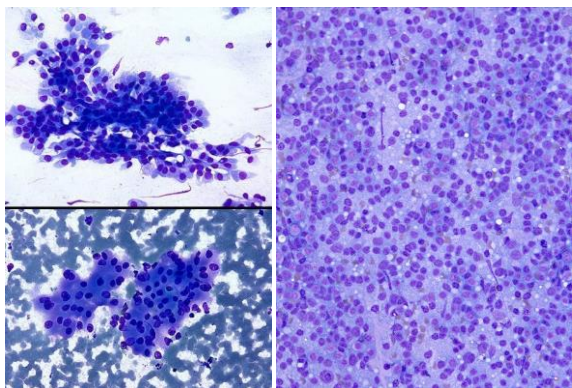
Normal Cells – TMS “Non-diagnostic”

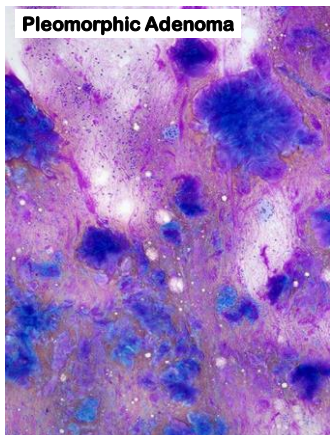


➔ Accurate Sampling is Critical

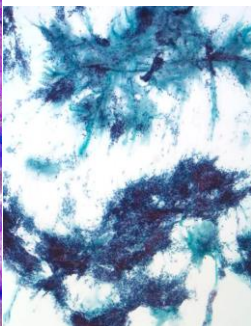
TMS - “Non-neoplastic”

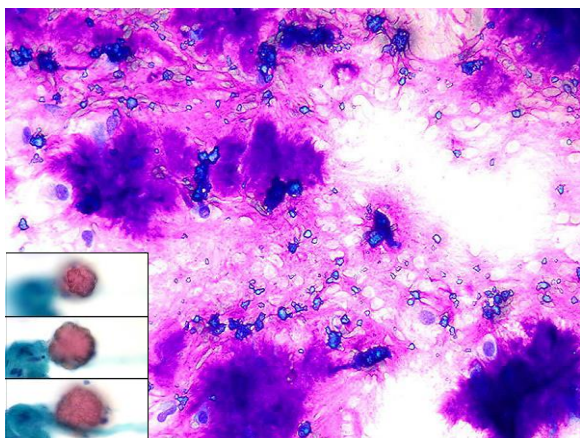


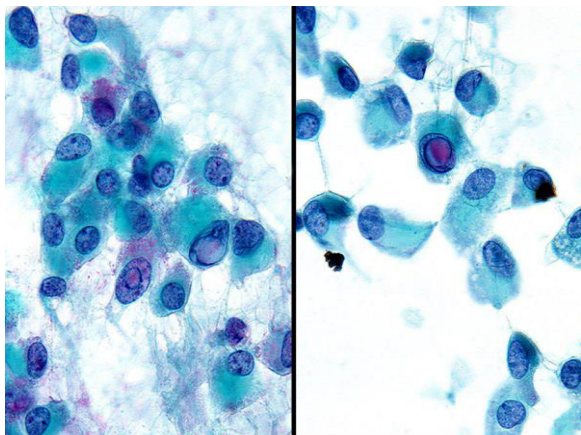




TMS - "Neoplastic - Benign"



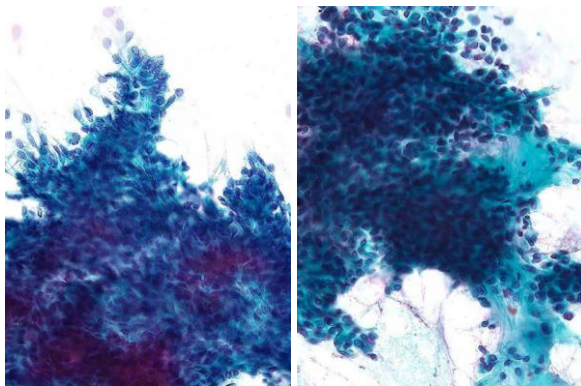




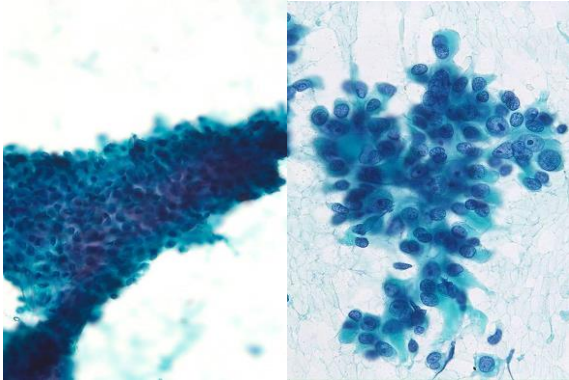
Diagnostic Pitfalls → TMS “AUS” or “SFM”

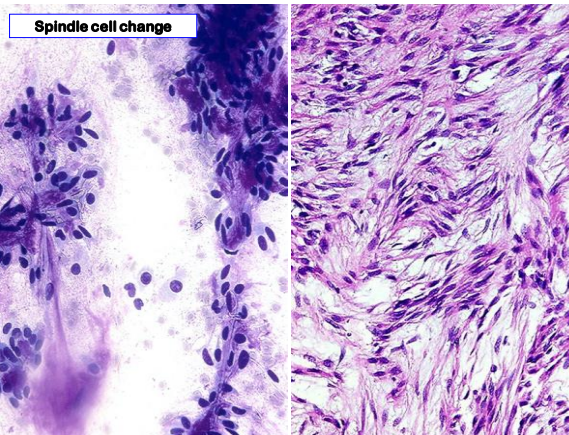
- Hypercellularity
- Epithelial atypia
- Spindle cell change
- Myoepithelial predominance
- Stromal atypia
- Metaplastic changes
 - Squamous
 - Mucinous
 - Oncocytic

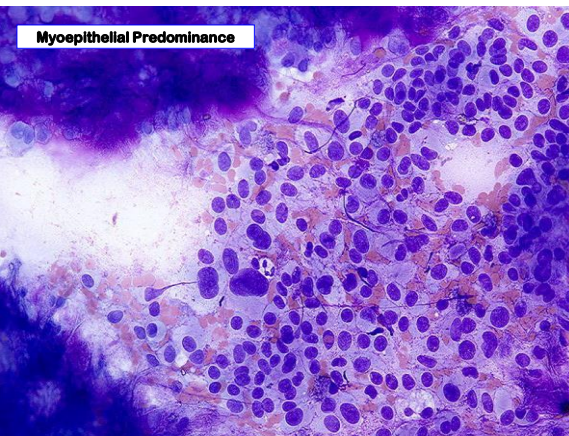
Hypercellularity

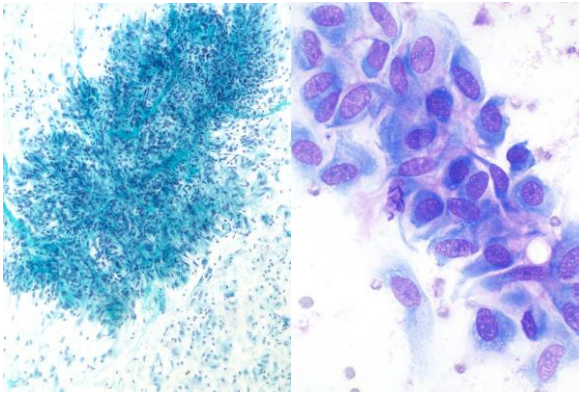


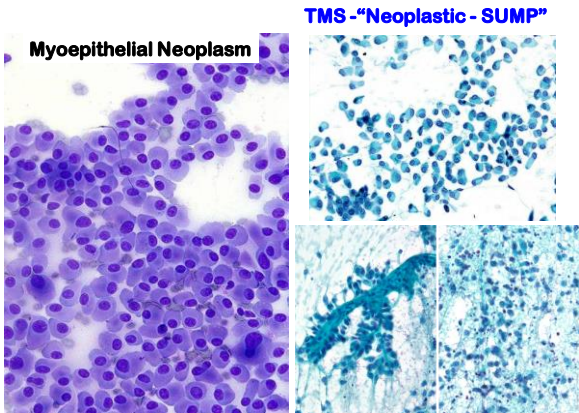
Epithelial Atypia

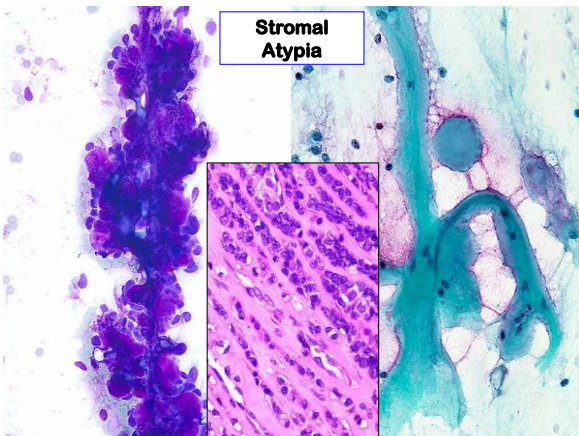


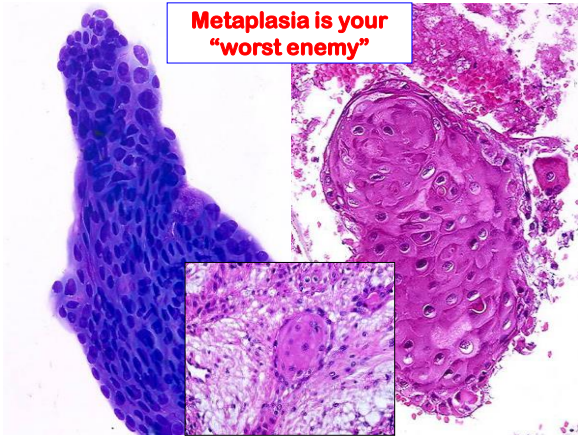


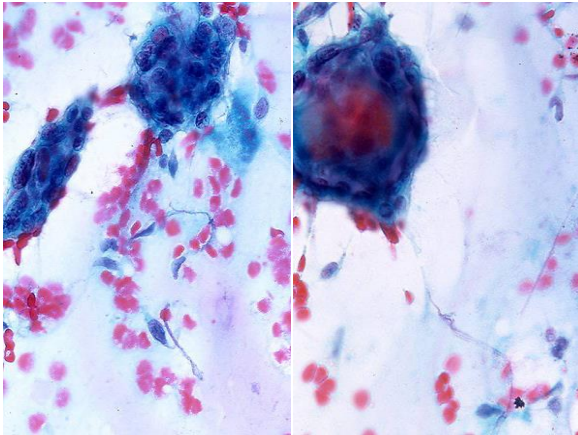


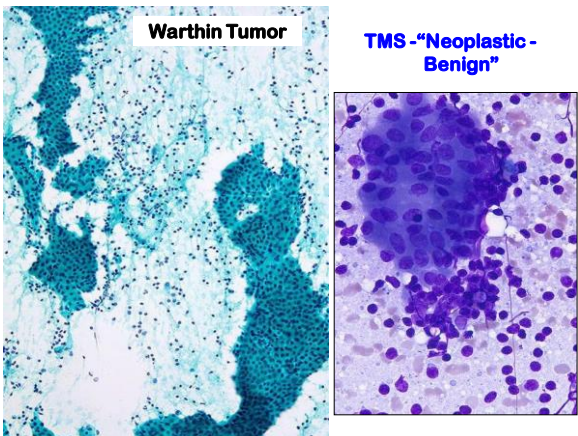


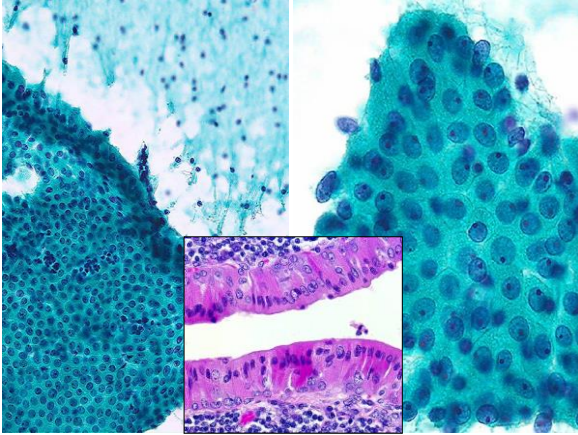


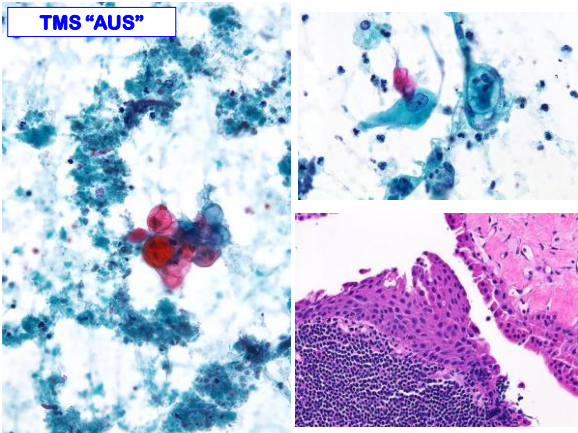


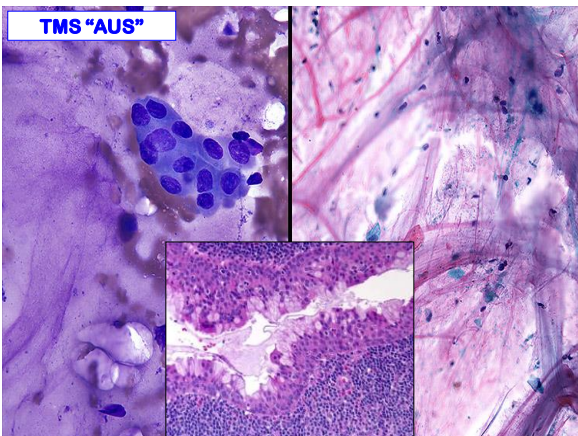


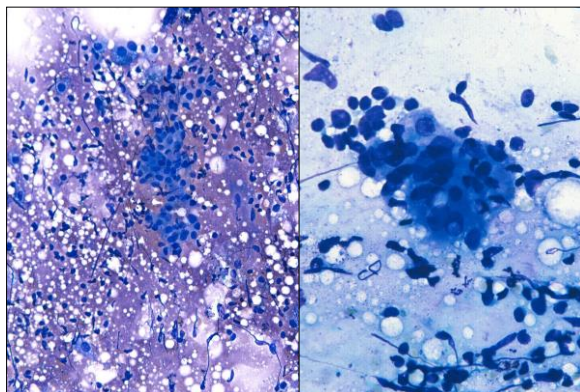




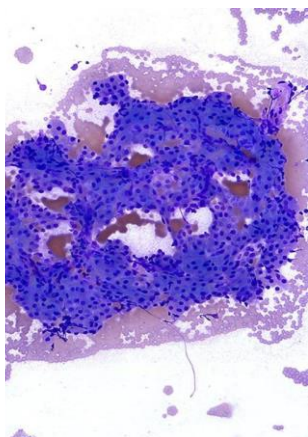




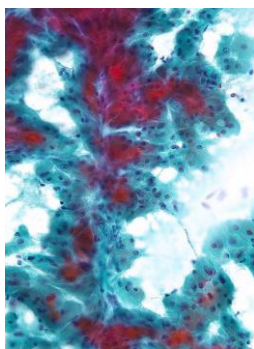


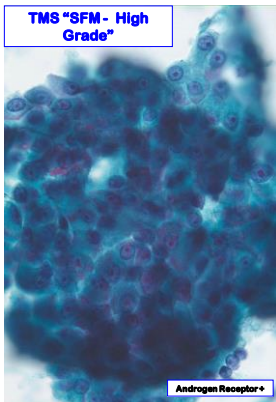
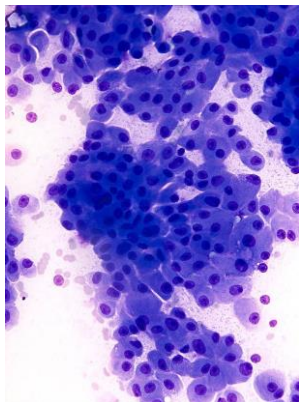


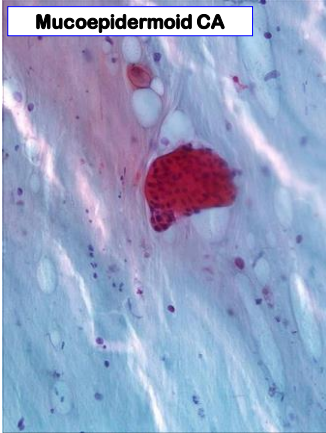
MAML2 Rearrangement



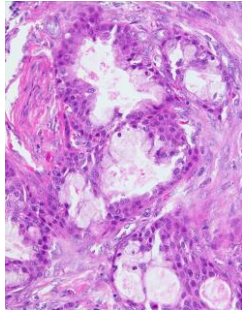
Oncocytoma

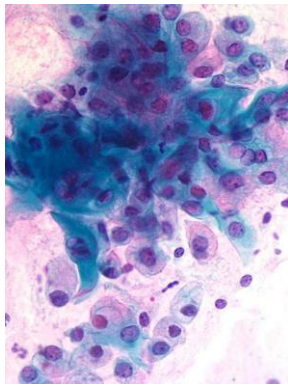
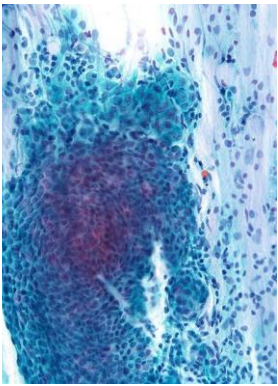


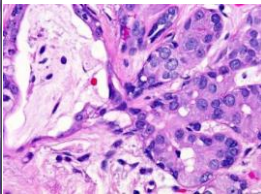
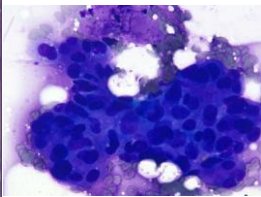
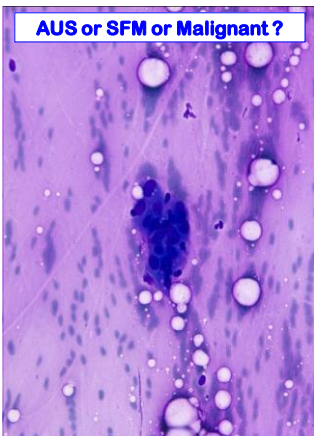


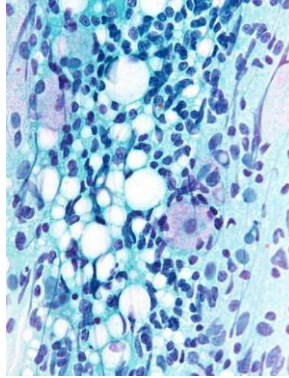
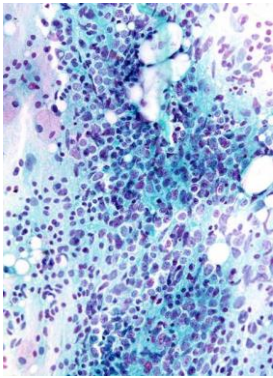


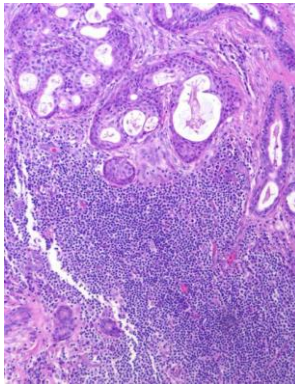
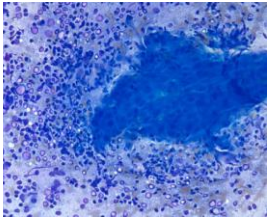
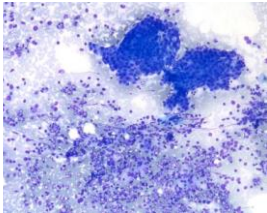
TMS "Malignant - Low Grade"



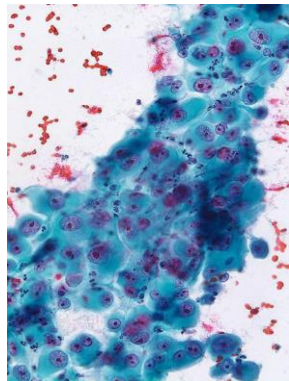
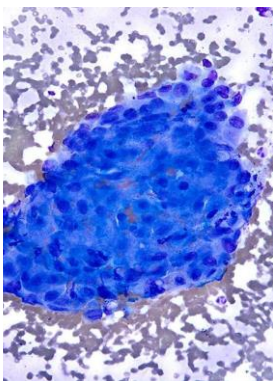


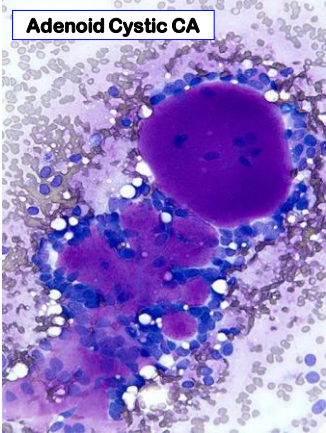




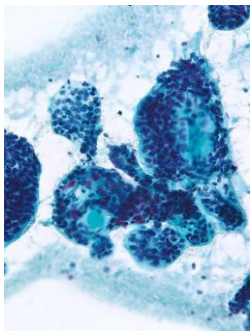


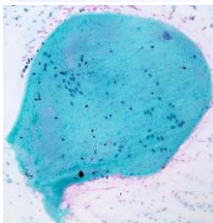
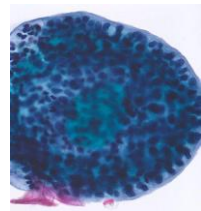
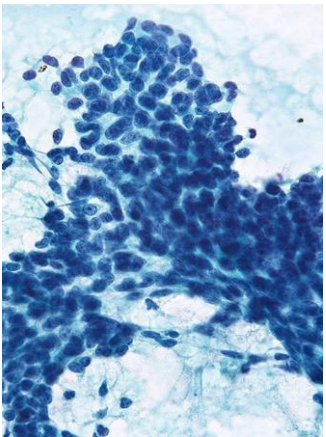
TMS "Malignant – High Grade"

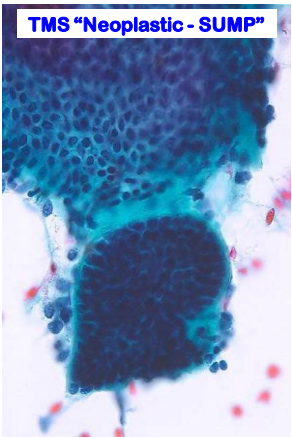




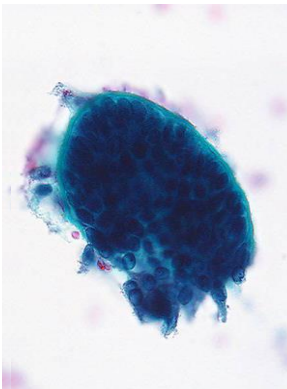
TMS "Malignant"

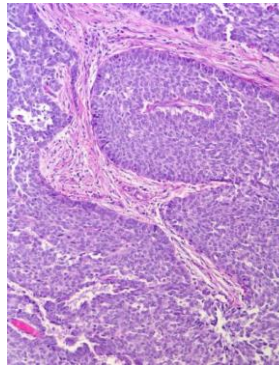
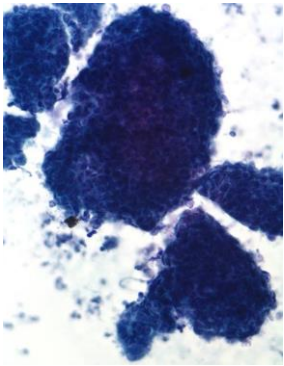




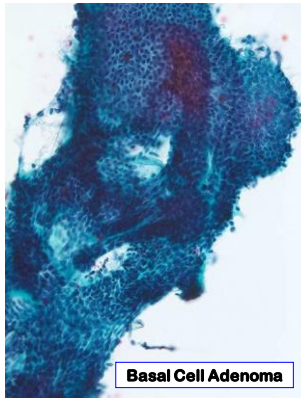
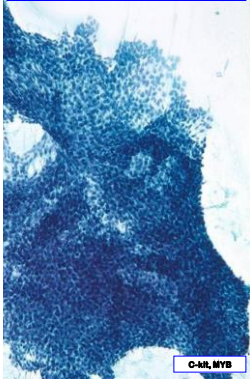


Basal Cell Adenoma

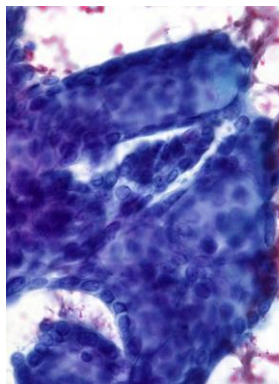
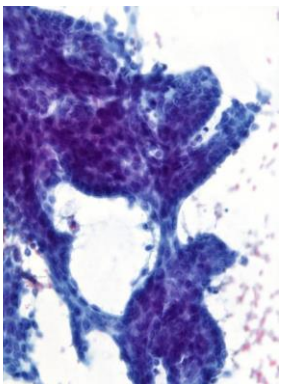


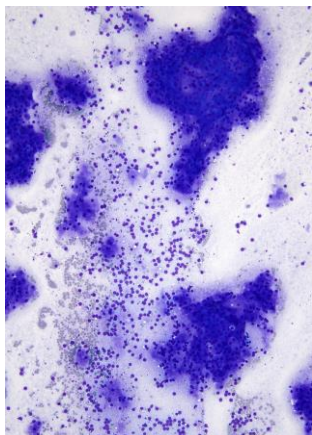


Adenoid Cystic Carcinoma

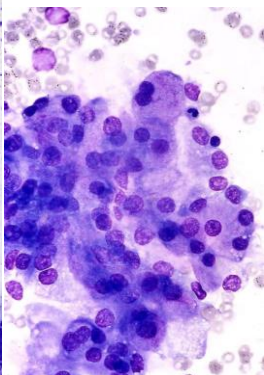


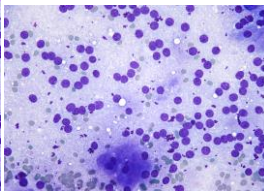
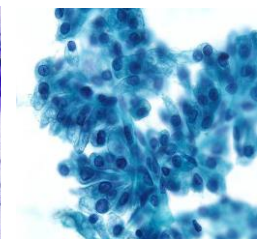
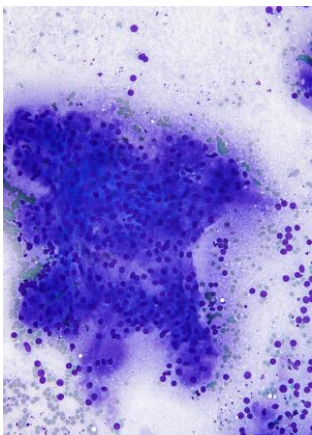
Basal Cell Adenoma

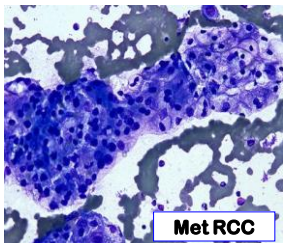
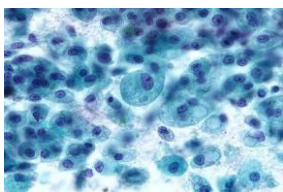
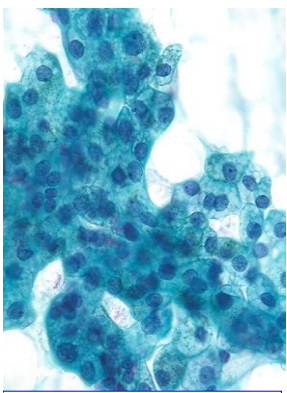




Acinic Cell CA







Secretory CA Mammoglobin, S100 p, ETV6-NTRK3 fusion gene, t(12;16)

Met RCC
